

CLUGTM

THE WORLD'S
SMALLEST



BIKE
RACK





The CLUG™ Bike Clip is the world's smallest bike storage solution, designed in Vancouver Canada by Hurdler Studios, Inc. It is a stylish, nearly invisible bike storage solution that is perfect for cyclists who are limited for space to store their bikes.

Weighing in at less than a kiwi fruit, CLUG magically holds your bike against the wall by squeezing the front tire as the rear tire sits on the floor. You simply lift your bike's front tire off the ground and CLUG it into place.

CLUG comes in 3 sizes to accommodate the most common tire widths and will be shipped with two screws and drywall anchors (except MTB which should be mounted directly to a wall stud). The minimalist packaging contains installation instructions on the inside of the packaging. We have gone to great lengths to make the experience of opening and installing your CLUG as simple as possible.



CLUG ROADIE

Roadie is the model that won the hearts of our Kickstarter backers and launched the product in May 2014. Suitable for standard road bike tire widths of 23mm - 32mm, Roadie is small, stylish, and perfect for the urban cyclist.

The Roadie is small enough that it virtually disappears into the decor yet magically displays the ride you're so proud of. It is a lifestyle product that brings personality and design in an affordable package.

All Models
MSRP \$19.99 USD
(Tax not included)



CLUG HYBRID

Being the middle child typically comes with some identity issues. This is not the case for our mid-range product. The CLUG Hybrid is completely comfortable with its role for tire widths of 32mm - 42mm (1.5" - 1.75").

Hybrid is perfect for commuter bikes and other mid-range slick tires. Hybrid can handle a bit of knob on your tire, but if you have dirt grabbing knobs on your tires, you likely need our MTB version.



CLUG MTB

Accommodating mountain bike tires between between 42 mm and 62 mm (1.75" - 2.5") is no small task. Have you seen knobs on those things? Some of them are as big as toddler's head.

CLUG MTB is up for the task. Designed with a slightly narrower opening and a wider tire pocket, MTB can handle most knobbly tires you throw at it.

COLOURS

Roadie

CLUG Roadie is a lifestyle product, so we've made sure to create a colour palette that fits the bill.



You love CLUG and you're reaching for it on the shelf but you're not sure which colour is in the box? We've thought about that. The colour of the box matches the outer clipper colour while the colour in the logo window indicates the colour of the inner gripper.



COLOURS

Hybrid & MTB

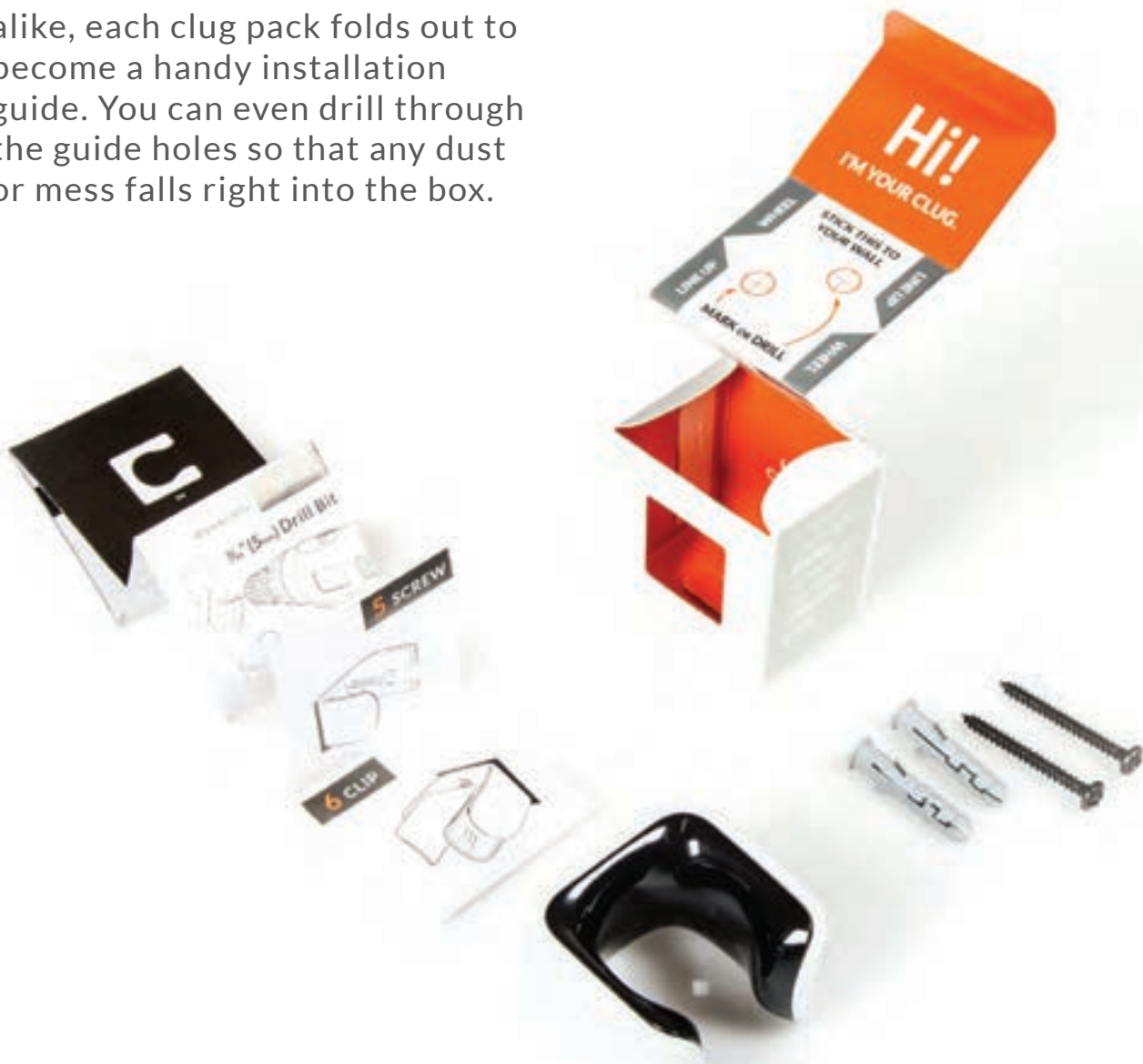


CLUG MTB and Hybrid are currently only available with whiteouters. We're looking forward to adding more colour options once you start selling CLUGs by the thousands!

IN THE BOX

We made the packaging for CLUG just as minimal and useful as the product itself. In the box you'll find all the hardware you need to get your CLUG on the wall.

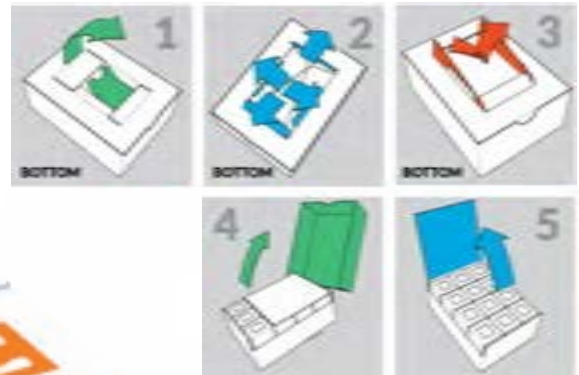
For DIY novices and aficionados alike, each clug pack folds out to become a handy installation guide. You can even drill through the guide holes so that any dust or mess falls right into the box.



ON SHELF

Our shelf-ready point of sale display box is shipped direct to stores with 24 mixed Roadies inside, ripe for the picking.

Remove the outer protective lid, pop up the base and your floating display stand will sit on any counter with pride!



THANK YOU!



getclug.com
sales@getclug.com
+1 (604) 559 **CLUG**



CLUG is made in the rain by Hurdler Studios, inc.
103 - 221 East 10th Avenue, Vancouver, BC V5T 4V1